

NAME: _____

Join the Leak Police

In this activity, you're going to learn how to read a water meter and use it to check for leaks!

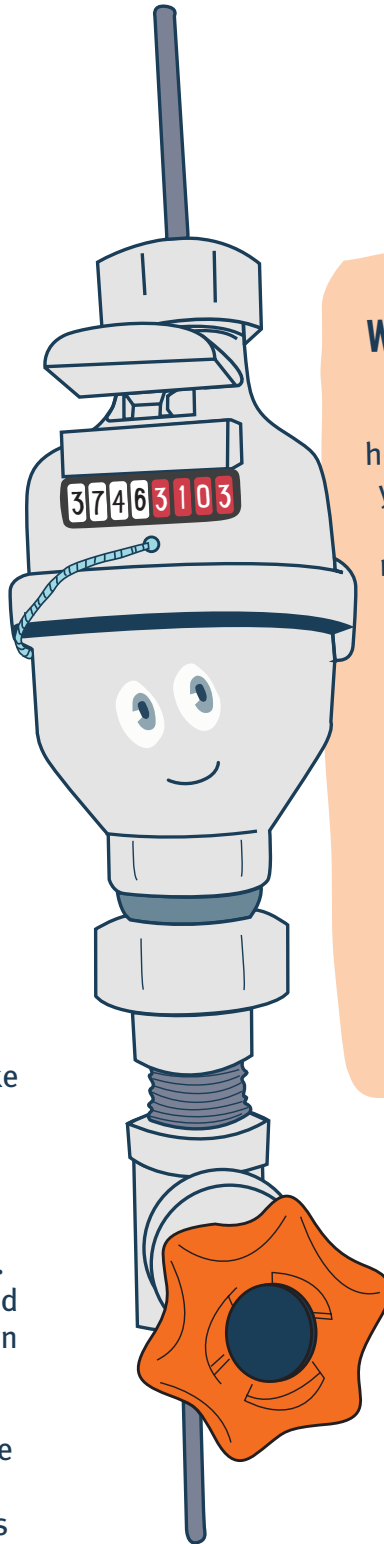
Helpful tip: Best done before bedtime and then first thing the next morning or before and after an outing.

You will need:

- An adult to help you
- A watch
- A pen or pencil

Prepare to investigate:

1. Tell everyone in your home that you are checking for leaks, and ask them not to turn the taps on or flush the toilet while you conduct the first and second parts of the test.
2. With an adult's assistance, make sure all taps and water-using appliances (like the washing machine or dishwasher) are turned off before you go outside to take the meter readings.
3. Your water meter is usually just inside the front boundary of your property, in a timber, plastic, concrete or metal box. Ask your adult helper to help you lift the lid and you should see the meter. DO NOT turn off the tap on the meter during the test.
4. Most water meters are a digital metric type like the one in the picture to the right. You may need to remove leaves and debris or flip up the protective cover to read the meter dial.



What is a water meter?

A water meter measures how much water is entering your home from the water supply system. As water moves through the meter, it turns a turbine (wheel) that is connected to a numerical dial. The dial measures the amount of water used.

Having a water meter allows people to easily check how much water they are using, and it also means they only pay for the amount of water that they use.

The water meter check



1. Read the meter dial from left to right, and write the figures in the box below:

First reading

2. In the morning or on return from your outing, read the meter again and write the second reading here:

Second reading

3. Replace the meter lid.

4. Now subtract the first reading from the second reading. If there is a difference, you may have a leak!

Second reading

minus -

First reading

Total =

kl

5. If you suspect that water was used during your investigation, you can always repeat the test again.

Read all numbers on the dial.

The numbers in the white rectangles on the meter dial above represent 3,746 kilolitres. The first 3 numbers in the red rectangles represent 310 litres with the last number in the red rectangle representing 3 millilitres.

← The amount of water 'lost' during my leak test

Congratulations, you've just completed your first meter reading!