

POUR-ON FOR SHEEP

20 LITRES

READ SAFETY DIRECTIONS BEFORE OPENING OR USING
FOR ANIMAL TREATMENT ONLY

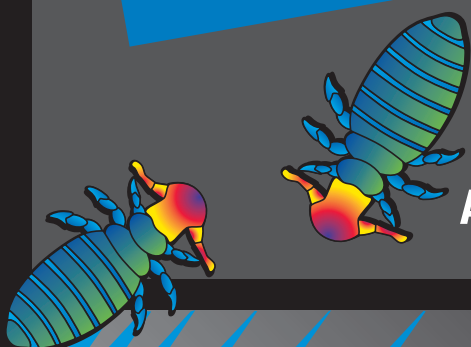
ElancoTM

AH0493

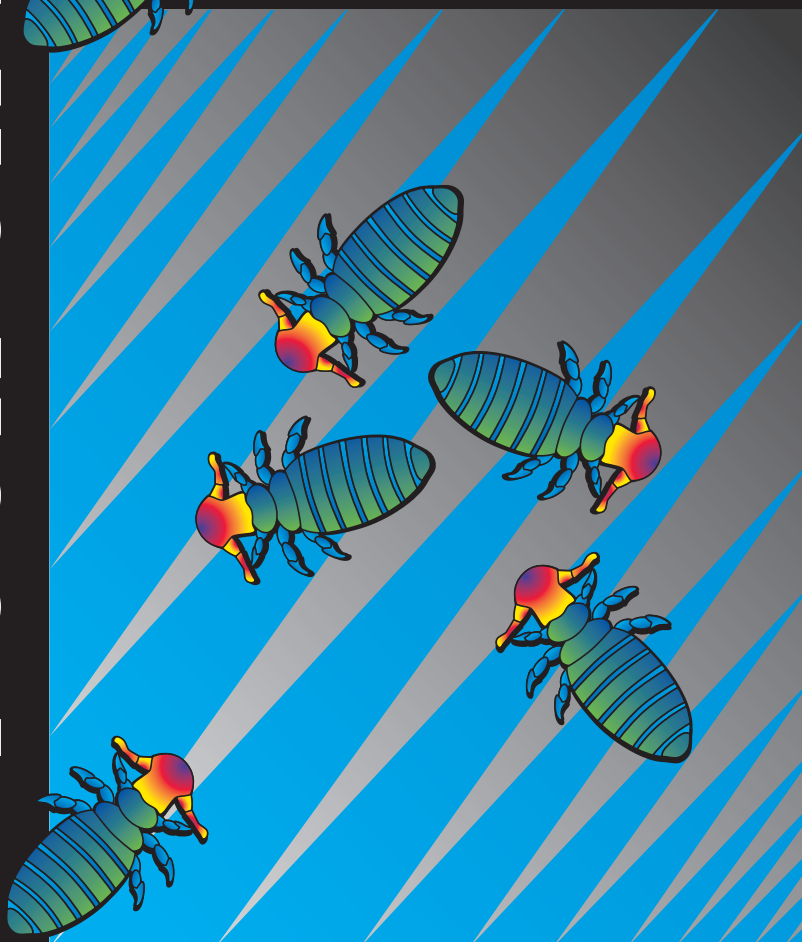


ExtinosadTM

TM



POUR-ON FOR SHEEP
ACTIVE CONSTITUENT: 20 g/L Spinosad



For the control of
spinosad-susceptible
lice (*Bovicola ovis*),
including strains
resistant to Synthetic
Pyrethroids (SPs), in
sheep up to 7 days
off-shears and sheep
with long wool.



READ DIRECTIONS FOR
USE BEFORE OPENING
OR USING THIS PRODUCT

YL090557ALA

For the control of spinosad-susceptible lice (*Bovicola ovis*), including strains resistant to Synthetic Pyrethroids (SPs), in sheep up to 7 days off-shears and sheep with long wool. Spinosad, the active ingredient in EXTINOSAD POUR-ON, is the first member of the spinosyn class of insecticides and has a unique action on the insect nervous system.

DIRECTIONS FOR USE:

RESTRAINTS:

DO NOT USE on ewes that are producing or may in the future produce milk that may be used or processed for human consumption.

DO NOT mix treated sheep with untreated sheep.

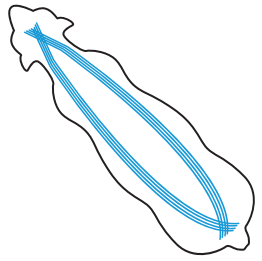
SHAKE CONTAINER GENTLY SEVERAL TIMES BEFORE USE

Apply EXTINOSAD POUR-ON evenly along the backline from the poll to the base of the tail using a manual or powered applicator with an EXTINOSAD POUR-ON 4-hole t-bar nozzle.

Halve the dose volume and apply in 2 bands, approximately 5 cm from the mid-point of the backline on each side. Applying the product to the flanks will improve the spread of

EXTINOSAD POUR-ON.

Dosage and administration

Sheep Category	Bodyweight (kg)	Dose (mL)	No. of sheep treated / pack	
Off-shears (Within 7 days after shearing)	20-30	15	1333	
	31-40	20	1000	
	41-50	25	800	
	51-60	30	666	
	61-70	35	571	
	Add 2.5 mL for each 5 kg above 70 kg			
Suckling Lambs (Unshorn)	Up to 9	5	4000	
	10-19	7.5	2666	
	20-29	15	1333	
	Add 3.5 mL for each 5 kg above 29 kg			
Long wool (6-12 months after shearing)	Adult (>6 months old)	50	400	

Critical use comments: Off-shears: Dose rates are to be based on the heaviest sheep in each group (ewes, rams, lambs). Sheep in each group should be weighed. Drafting into two or more lines may be appropriate, to avoid excessive overdosing. Do not underdose; check the accuracy of equipment before and during treatment. Use only on sheep that have been cleanly shorn. Long wool: Sheep treated with long wool should be re-treated after shearing. Reduced effectiveness is likely if used on sheep with lumpy wool. For ewes with suckling lambs, treat lambs at the appropriate rate, see table.

This product has not been tested on sheep shorn using "cover-combs".

General Directions: EXTINOSAD POUR-ON is a short acting, non-residual product.

Maximum lice kill at treatment and strict quarantine conditions for treated sheep are necessary for effective lice control. It is recommended that a thorough muster be conducted so that no untreated sheep remain.

Boundary fences should be checked to ensure animals are contained and stray sheep are excluded. Treated sheep must be kept separate from lice infested sheep or sheep of unknown lice status.

For effective lice control, every sheep on the property should be treated at the same time.

Efficacy and safety studies using EXTINOSAD POUR-ON involved treatment of ewes, rams, wethers and lambs. Lice efficacy was not specifically evaluated in lambs less than 6 months of age, however, lice control was achieved in ewes with lambs at foot when both were treated at the recommended rate. It is good agricultural practice not to treat ewes within 6 weeks of the commencement of lambing.

EXTINOSAD POUR-ON is spread over the body by passive diffusion and physical contact (e.g. rubbing with other sheep). Studies have shown that penning sheep closely in the yards immediately after application facilitates product movement.

It is good agricultural practice not to treat animals when they are wet or if rain is likely. However, moderate rainfall (20 mm in 20 minutes) following treatment does not adversely affect the effectiveness of the product.

EXTINOSAD POUR-ON contains a blue dye to identify treated sheep. Traces of blue dye may still be visible at shearing, but the dye is scourable from the wool. Do not leave container, hose or applicator in the sun for long periods of time. At the end of use, clean out the applicator, nozzle and hose by pumping through with clean water.

NOT TO BE USED FOR ANY PURPOSE, OR IN ANY MANNER CONTRARY TO THIS LABEL UNLESS AUTHORISED UNDER THE APPROPRIATE LEGISLATION.

WITHHOLDING PERIODS:

MEAT: Off-shears: **DO NOT USE** less than 14 days before slaughter for human consumption.

Suckling lambs: **DO NOT USE** less than 14 days before slaughter for human consumption.

Long wool: Zero (0) days.

MILK: **DO NOT USE** on ewes that are producing or may in the future produce milk that may be used or processed for human consumption.

WOOL: Zero (0) days.

TRADE ADVICE:

Export Slaughter Interval (ESI): **DO NOT USE** less than 21 days (off-shears and suckling lambs), or 0 days (long wool) before slaughter for export. Before using this product, confirm the current ESI from Elanco Australasia Pty Ltd on 1800 226 324 or the APVMA website (www.apvma.gov.au/residues). Use of this product may result in wool residues that may not comply with European Union environmental quality standards. Wool treated with this product may contain detectable residues; adequate treatment records should be kept and made available, if requested by wool buyers.

SAFETY DIRECTIONS: May irritate the skin. Will damage eyes. Avoid contact with eyes and skin. If product in eyes, wash it out immediately with water.

Wash hands after use. When using the product wear elbow-length PVC gloves and goggles. After each day's use wash gloves.

FIRST AID: If poisoning occurs, contact a doctor or Poisons Information Centre. Phone Australia 131126.

ADDITIONAL USER SAFETY INFORMATION

Sheep Rehandling Interval: After treatment wait until sheep are dry before rehandling.

Safety Data Sheet

If additional hazard information is required, refer to the Safety Data Sheet. For a copy phone 1800 226 324.

DISPOSAL: Triple or (preferably) pressure rinse container with water and dispose of rinsate in a disposal pit set up for this purpose clear of waterways, vegetation and roots. Do not dispose of undiluted chemicals on site. Break, crush or puncture and bury empty containers in a local authority landfill. If not available, bury the containers below 500 mm in a disposal pit. Empty containers and product should not be burnt.

STORAGE: Store below 30°C (Room Temperature) in a dry place in tightly closed original container. Do not freeze. Do not store in direct sunlight.

KEEP OUT OF REACH OF CHILDREN

APVMA Approval No: 60117/105241

Elanco Australasia Pty Ltd

ABN 64 076 745 198

112 Wharf Road, West Ryde NSW 2114, Australia

Australia: Tel: 1800 226 324

Extinosad, Elanco and the diagonal bar logo are trademarks of Eli Lilly and Company or its affiliates.

AH0493

YL401875X

Batch Number:

Expiry Date:

20 LITRES



9 323829 003108