

ROSIE MAY CHARDONNAY

VINTAGE 2019



Golding Portrait Series

Our premium range of wine, the Portrait Series, is an ode to some of our much-loved family members. Like any family, we have many interesting characters with wonderful stories to tell. These exceptional wines are produced using premium parcels of handpicked fruit and considered barrel selection.

Tasting Note

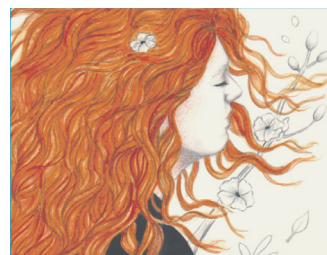
Pale straw in colour with lifted aromas of nectarine and spice, with bright stone fruit and jasmine flavours on the palate. A delicious toasted cashew character gives way to a crisp and lingering finish.

Technical Notes

Grape Variety:	100% Chardonnay
Growing Area:	Estate Grown, Lenswood, Adelaide Hills
Winemaker:	Darren Golding, Natasha Mooney
Alcohol Volume:	12%
Closure:	Stelvin
Maturation:	12 months on old and new French oak
Cellar Potential:	15 years
Residual Sugar:	Dry
Acidity:	5.0g/L
pH:	3.44



"This wine is named after our first-born daughter, Rosie May Golding. She entered our world and changed our lives forever one year after we launched our wine label. Her pediatrician mentioned at the time that he looked forward to trying a Rosie May Chardonnay sometime in the future (how could it NOT be a Chardonnay?). When it came time for this wine to join our Portrait Series we always knew it was destined to carry her name".



GOLDING WINES | Tasting Room | Ginkgo Restaurant | Experiences | Events

Family owned. Proudly Adelaide Hills.

52 Western Branch Road, Lobethal South Australia
ph: 08 8189 4500 www.goldingwines.com.au



GOLDING
ADELAIDE HILLS