



FIERCE III

LOU MIRANDA ESTATE
BAROSSA VALLEY
EST 1939



LIVING **FIERCE** SINCE
1939



LOU MIRANDA ESTATE
BAROSSA VALLEY
EST. 1939



Lou Miranda Estate

- Established 2005 by Lou & Valerie Miranda together with their daughters Lisa, Angela & Victoria.
- Located in Southern Barossa Valley with 100 acres of vines managed by the family.
- Specialising in hand tendered and hand harvested Old Vines dating back to 1898 & 1907.
- Exporting worldwide with the ability to sell at scale and service all channels.

FIERCE III

TO THE FUTURE

We are three passionate women dedicated to creating unique experiences using fruit from our Barossa vineyards.

A legend of the Barossa Lou Miranda Estate is stepping boldly into the future with a fresh and energised new arm of its brand - a fullbodied adventure for those who appreciate bold Australian wines.

Drawing on the strength of our loyal following, rich experiences and future focused vision, is our desire to push new boundaries.

Along with our tireless pursuit of excellence comes a bold new venture, aiming to entice and build a new audience to complement our long established brand with fresh energy.







FIERCE III

Prosecco, King Valley

2021 Dry Rose, Barossa Valley

2021 Pinot Grigio, Barossa Valley

2019 Shiraz, Barossa Valley

2019 Cabernet Sauvignon, Barossa Valley

2019 Sagrantino, Barossa Valley

2019 Shiraz Grenache Mataro, Barossa

Lou Miranda Estate

2016 Old Vine Shiraz, Barossa Valley

2018 Old Vine Grenache, Barossa Valley

2015 Old Vine Shiraz Mourvedre, Barossa Valley

2015 Master Piero Shiraz, Barossa Valley

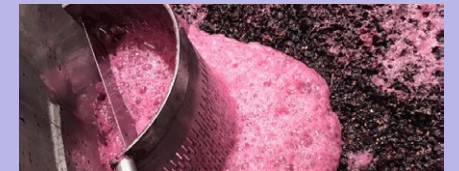
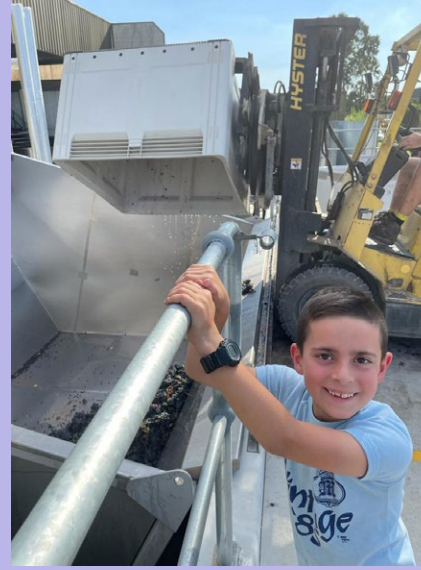
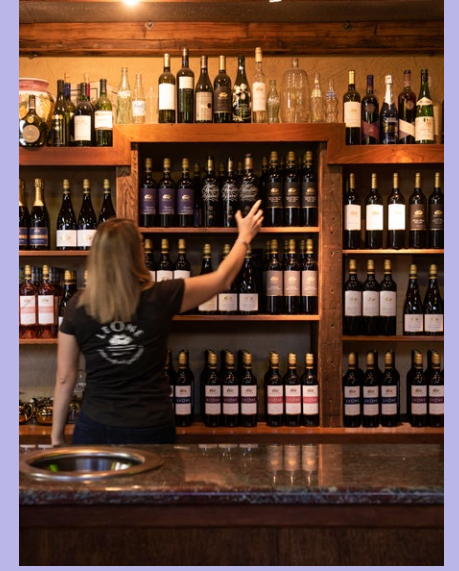




Heritage is our north star. Now our faces are turned to the future - Like vines to the sun - carrying family with us in our hearts, and inviting you to our table.



STRENGTH



INDEPENDENCE



AUTHENTICITY



LIVE FIERCE

At the heart of our winery is family, the seed from which all else grows. The power of three, combining our strengths and passion to make memorable wines. We honour our heritage, embrace the present and toast to the future. Live Fierce!



CONTACT

Lisa Miranda, General Manager

M +61 418 828 807

lisa@loumirandaestate.com.au

Victoria Miranda, Marketing

M +61 408 409 689

victoria@loumirandaestate.com.au

1876 Barossa Valley Way, Rowland Flat

loumirandaestate.com.au

facebook.com/LouMirandaEstate

instagram.com/LouMirandaEstate

