



FAMILY WINEMAKERS  
**BURGE**  
SINCE 1928

# Overview

---

*"Burge Family Winemakers has established itself as an icon producer of exceptionally rich, lush and concentrated Barossa red wines."*

*James Halliday*

Burge Family Winemakers based in Lyndoch in the Barossa Valley, is steeped in history, with wine production commencing in 1928. The Burge brand has forged a reputation for making wines of excellence and character.

The Barossa Valley is renowned around the world for producing amazing quality wines, with the warm, dry summers and weathered soils, producing grapes of immense flavour and purity. Burge's own forty hectares of premium vineyards in the Lyndoch and Stockwell sub-regions, with Centurian Old Vine Grenache (planted in the 1920s), Old Vine Shiraz, Mataro, Cabernet Sauvignon and Merlot.

A philosophy of minimal intervention in both the vineyard and winery is exercised. Low cropping, hand pruning and hand picking ensures premium quality fruit. Gentle handling of the grapes in the winery ensures wines of great character and sense of place.

Burge Family Winemakers was an early innovator of alternative varieties to respond to the changing climate and provide wines with different characters.

# Our Story

---



Nestled in the southern end of the Barossa Valley near the sleepy village of Lyndoch, sits the winery and cellar door for Burge Family Winemakers. At an altitude of 170m AMSL, the estate vineyards are at the lowest point of the Valley, situated to get the best of the long summer days that give perfect ripening conditions each year.

Members of the Burge family emigrated from Wiltshire County in England to the Barossa Valley in 1855 and started a love affair with vineyards and winemaking. The Burge Family wine company was created in 1928, but after several lost years, the third generation picked up the baton in the 1950s using dry grown estate planted vines to make rich and complex Barossa wines.

Rick Burge took over the stewardship of the company from his father in the 1980s. He was at the helm for over 30 years before he passed the company vineyards and brand over to a new generation of wine lovers, the Wilsford Group. They have continued the Burge Family tradition of producing fine wines with the purchase in 2019 of a vineyard at the northern end of the Barossa in Stockwell, to supplement the super-premium range.



# Estate Vineyards

## Stockwell Vineyard (Northern Barossa Valley)

Elevation	310-340m
Soil Type	Red brown earth over red clay and limestone
Varieties	Shiraz, Grenache, Mataro, Cabernet Sauvignon, Merlot, Tinta Cao, Souzao and Zinfandel
Vine Age	23 to 25 years old

Atze's Corner Wines Estate

Burge Family Wines has two Barossa Valley vineyard sites, totalling 40 hectares, including the Stockwell Vineyard in the North and Lyndoch vineyard in the South.

Shiraz covers more area than other planted varieties which include 100-year-old Grenache, 40+ yr Mataro, Cabernet Sauvignon, Tempranillo, Merlot, Tinta Cao, Zinfandel and Sousao. The two sites offer very different microclimates and soil types which add complexity to the wines, particularly when blending or when producing single vineyard releases.

# Barossa Old Vine Charter

---



In 2009 the Barossa Old Vine Charter was instituted to register vineyards by age, so that older vines could be preserved, retained and promoted. Burge Family Winemakers is proud to continue to preserve the Centenarian Grenache vines planted by Cecil Denholm in 1920.

These gnarly old bush vines carry low crops which produce wines with amazing depth of flavour and character. Old Vine Mataro, planted in the 1960s, produces wines of complexity and quality. Almost all the vines on the Lyndoch Vineyard are thirty years and older, supplying amazing quality fruit grown on mature vines.

## Lyndoch Vineyard (Southern Barossa Valley)

Elevation	170m
Soil Type	Alluvial soils over clay moving up the hill to clay over limestone
Varieties	Shiraz, Grenache, Mataro, Cabernet Sauvignon, Merlot, Tinta Cao, Souzao and Zinfandel
Vine Age	Between 30 and 100 years old

# Winemaking

---

Chief Winemaker, Derek Fitzgerald, started his career over twenty years ago with seventeen of those years making premium wine in the Barossa. Derek's strongly held belief that the best wines are made in the vineyards, means he pays particular attention to the vines from pruning to harvest. The primary objective is controlling the yields and having a balanced canopy. Careful irrigation allows management of berry and bunch size.

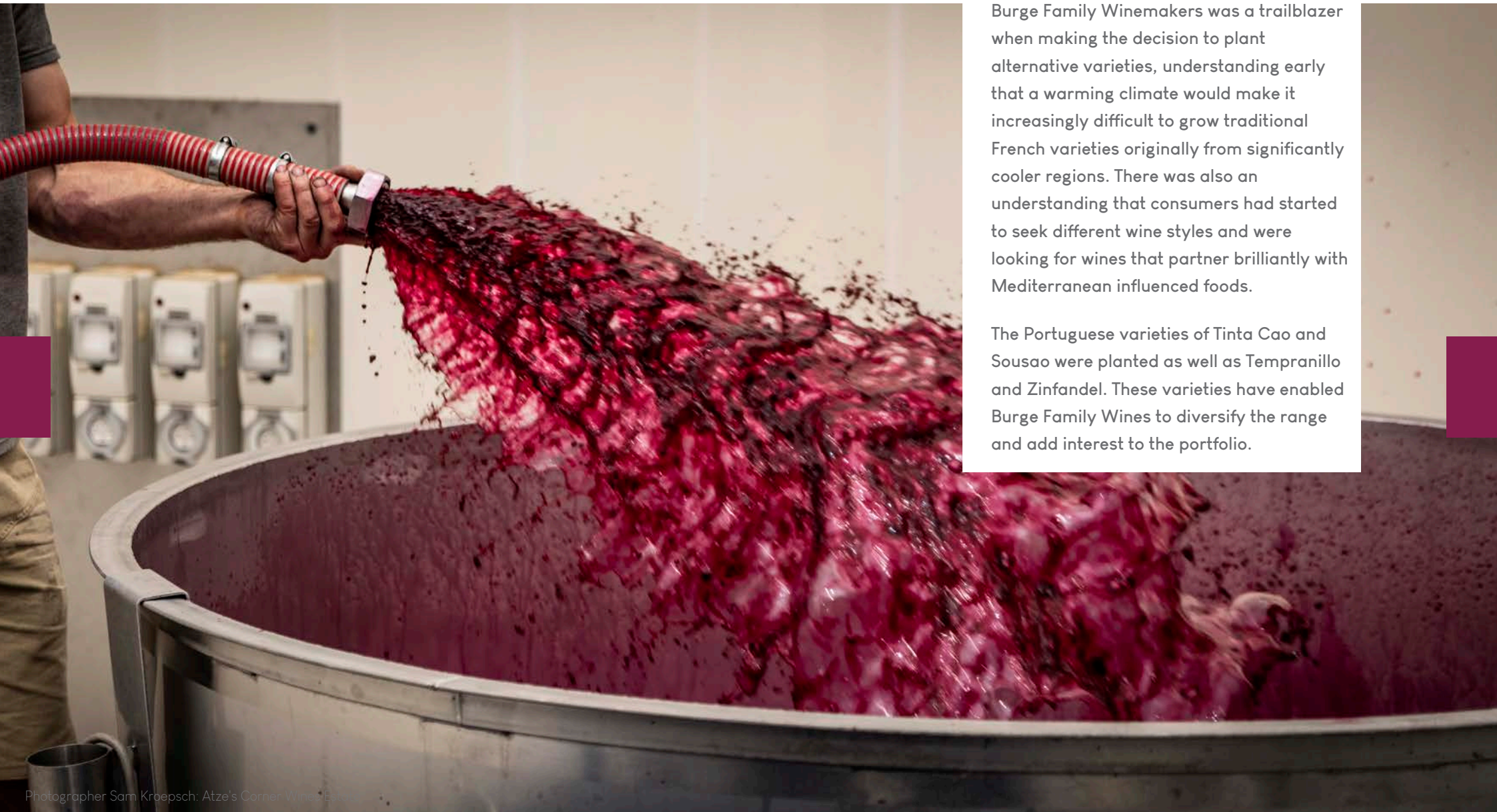


When it comes to harvest, this management style and the fact that the vineyard uses hand-picking, produce grapes with great colour, intensity of flavour and balanced tannin structure.

Minimal handling at the winery using traditional winemaking techniques includes the use of small open ferments, hand plunging and basket press. All wines are matured in oak and careful oak selection is employed with only the finest French and American oak chosen. Oak is partnered with each range to provide optimal flavour and tannin structure.

# Alternative Varieties

---



Burge Family Winemakers was a trailblazer when making the decision to plant alternative varieties, understanding early that a warming climate would make it increasingly difficult to grow traditional French varieties originally from significantly cooler regions. There was also an understanding that consumers had started to seek different wine styles and were looking for wines that partner brilliantly with Mediterranean influenced foods.

The Portuguese varieties of Tinta Cao and Sousao were planted as well as Tempranillo and Zinfandel. These varieties have enabled Burge Family Wines to diversify the range and add interest to the portfolio.

Photographer Sam Kroepsch: Atze's Corner Wine Estate

# Our Wines

Within the portfolio, there are three distinct tiers - Wilsford, Homestead and Draycott. The company aims to deliver excellent value at each range level. Excellent fruit and balance with increased depth of flavour, complexity and cellaring potential changes throughout.

## Wilsford

This range is named for the Wilsford village just over the hill in County Wiltshire in England, from where the Burge family emigrated to South Australia. The entry level range includes Shiraz, Grenache Shiraz Roussanne blend, Tempranillo and Merlot. Upfront fruit and soft tannins provide immediate drinkability with this range. It appeals to a novice wine drinker as well as experienced palates. The fruit is bright and juicy with minimal oak influence.

### Wilsford AWARDS

James Halliday Awarded 2018 Wilsford GSR	95 points
James Halliday Awarded 2019 Wilsford Tempranillo	94 points



# Our Wines

## Homestead

The Homestead range pays tribute to the original holders of the land at the Burge Lyndoch property. The Homestead, which is now a Bed and Breakfast, was built in 1905 from stone sourced at a nearby quarry. This range includes Old Vine Grenache, Mataro and the Tinta Cao-Sousao blend. The wines are rich, full and flavoursome with great complexity. They will reward medium to long term cellaring.



*Burge Family Winemakers* AWARDS

James Halliday 2021

5 Star Winery

# Our Wines



## Draycott AWARDS

2018 Draycott Shiraz - James Halliday Awarded	95 points
2017 Draycott Shiraz - James Halliday Awarded	95 points
2018 Draycott Cabernet - James Halliday Awarded	95 points
2017 Draycott Cab Sav - James Halliday Awarded	94 points

Barossa Grape & Wine Association: Photographer Sven Kovac

John Burge emigrated to South Australia in 1855 from Draycott in County Derby, England, leaving a trade as one of the Queen of England's personal tailors. The top tier in the Burge portfolio uses fruit from the oldest vines and has exacting attention to detail in the winery. The Draycott wines are restricted to the iconic Barossa varietals of Shiraz, Cabernet Sauvignon and a blend of the two. Barrel selection ensures the quality and with deep rich fruit, impeccable balance and silky tannins, the wines will age forever!



# Robert Parker Award

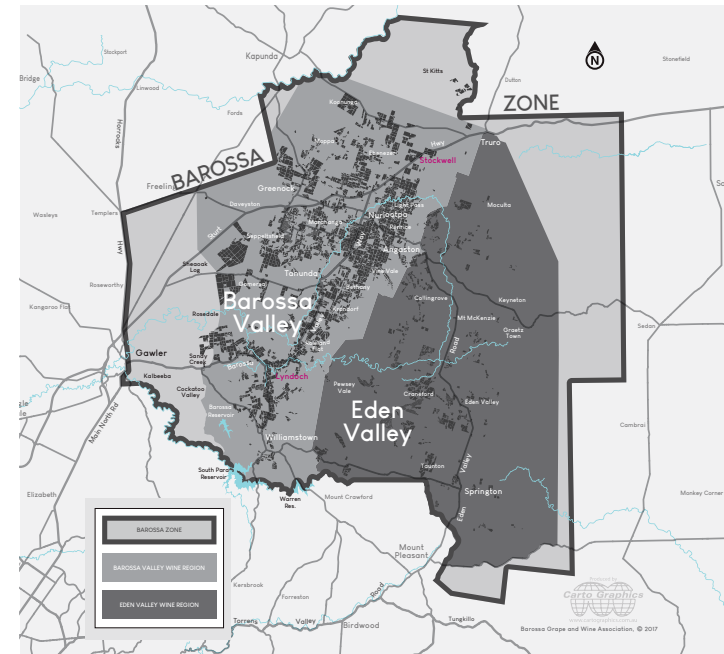
The esteemed wine journalist Robert Parker awarded the 1998 Draycott Shiraz 99 points and put the winery in his book "World Greatest Wine Estates". He also awarded 90+ points to numerous wines.

*Draycott* AWARDS

1998 Draycott Shiraz - Robert Parker Awarded

99 points

# Contact Us



## Burge Family Winemakers

1312 Barossa Valley Way  
Lyndoch South Australia 5351

## Contact

Derek Fitzgerald, Chief Winemaker

**Mob** +61 491 377 737

**Email** [winemaker@burgefamily.com.au](mailto:winemaker@burgefamily.com.au)

**Website** [www.burgefamily.com.au](http://www.burgefamily.com.au)



@burgefamilywinemakers



@burgefamilywinemakers