

JOVAL

FAMILY WINES

2024 EDITION

Joval Family Wines

What we do
06

Our People
08

The Vineyards
10

Our Wineries
16

Plumm Glassware
38

Our Story
40

We are **winemakers**
We are **grape growers**
We are **wine marketers**

We own a collection of boutique premium wineries in Australia & New Zealand. We retain a flexible model allowing us to pursue brands and wineries that will leave a legacy, while also having capability to scale, grow and set trends. The world of wine is ever evolving, and we firmly value the connections we have established over time bringing winemakers, together with vineyards to deliver our art; wine.

To me this is more than a business, it's a passion. My role is to try and inspire our team and help them fulfill their potential, expressed in a glass. Wines that will be enjoyed today and leave a legacy for the next generation.



JOHN VALMORBIDA



NARELLE KING
CENTRAL VICTORIA



ANTHONY FIKKERS
YARRA VALLEY & MORNINGTON PENINSULA

Winemakers & Winegrowers

Dedicated winemaking and viticultural teams operating in each of our key regions looking after winemaking, owned vineyards & grower vineyards.



FRASER BROWN & MATTHEW WARD
MARLBOROUGH



KEEDA ZILM
SOUTH AUSTRALIA



ALAN PETERS-OSWALD
CENTRAL OTAGO



Winemarketers

Based out of Melbourne, our sales, marketing, finance, logistics and operations teams combine decades of experience and knowledge servicing over 20 markets internationally.



Our Vineyards

To date, we own and manage 175ha of vineyard across Australia and New Zealand. We have contracts with long terms growers in place for a further 150ha and play a significant role in the management of these sites; we have worked with many of these growers for over a decade and see them as a key piece of our strategy ongoing.

Continuity in sourcing is crucial in delivering wines vintage on vintage that are expressive of place. Each estate plays a vital role in production for its associated brand.



LONG GULLY VINEYARD // HEALSVILLE, YARRA VALLEY



NANNY GOAT VINEYARD // CENTRAL OTAGO, NEW ZEALAND

We practice regenerative viticulture practices on all our owned vineyards, working with local sustainability bodies to ensure we generate healthy soils and rich biodiversity in the environment. All our New Zealand vineyards are certified with Sustainable Wine Growing New Zealand; this body regulates the use of water, chemicals, and yields.

In 2019, our Central Otago Vineyard in Queensberry was certified organic with BioGro New Zealand. We are passionate about preservation, restoration and balance.



SOUND OF WHITE VINEYARD
WAIHOPAI VALLEY, MARLBOROUGH

SIZE: 32Ha

**PLANTED TO SAUVIGNON BLANC,
PINOT GRIS, CHARDONNAY
& PINOT NOIR**

Situated in the sought-after Southern Valleys sub-region. An awe-inspiring and peaceful place elevated some 200m above sea level, with its own micro-climate and distinct soil profiles that create real wines of place.



NANNY GOAT VINEYARD
QUEENSBERRY, CENTRAL OTAGO

SIZE: 36Ha

**PLANTED TO CHARDONNAY
& PINOT NOIR**

Sitting between 270m and 290m above sea level spread across three ancient, North East facing terraces in the Queensberry Sub Region, approximately halfway between Cromwell and Wanaka at the base of the of the Northern end of the Pisa Mountain range.



NANNY GOAT VINEYARD
BENDIGO, CENTRAL OTAGO

SIZE: 20Ha

PLANTED TO PINOT NOIR & SYRAH

Located on Loop Road, in the Bendigo sub-region of Central Otago. This is a short 15 minute drive from our Nanny Goat home vineyard on Queensberry Terrace.

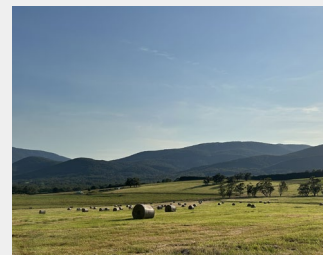


CHINAMAN'S RIDGE VINEYARD
BENDIGO, CENTRAL OTAGO

SIZE: 10Ha

PLANTED TO PINOT NOIR

Nestled high above Loop Road, the vineyard overlooks the foothills of the adjacent Pisa Ranges. The extreme undulation in the vineyard produces wines very unique to the site.



YARRA JUNCTION, YARRA VALLEY

SIZE: 20Ha

**PLANTED TO CHARDONNAY,
PINOT NOIR & NEBBIOLO**

We begun planting out this new vineyard in 2023. It is set among the luscious green hills of Yarra Junction in the Upper Yarra, a sub-region home to some of the highest elevation and coolest sites in the Yarra Valley. The textural, ancient volcanic soils found in these hills helps to craft unique, mineral driven wines.



**GHOSTGUM VINEYARD, MAIN RIDGE,
MORNINGTON PENINSULA**

SIZE: 6Ha

**PLANTED TO CHARDONNAY
& PINOT NOIR**

Situated atop Main Ridge, Ghostgum Vineyard is one of the highest elevation vineyards on the Mornington Peninsula. Here we farm 5.5 hectares of Pinot Noir and Chardonnay on a gentle, east-facing slope.



LONG GULLY VINEYARD
HEALESVILLE, YARRA VALLEY

SIZE: 17Ha

**PLANTED TO CHARDONNAY, PINOT NOIR,
CABERNET SAUVIGNON, MERLOT, SYRAH,
GRENACHE BLANC & PIQUEPOUL**

Long Gully Vineyard is situated on the outskirts of Healesville in the heart of the Yarra Valley. Surrounding our winery, Long Gully is comprised of 17 hectares of idyllic vineyard with plantings up to 40 years old.



RISING VINEYARD
ST ANDREWS, YARRA VALLEY

SIZE: 34Ha

**PLANTED TO CHARDONNAY, GAMAY
& PINOT NOIR**

Rising Vineyard is nestled among the rolling hills of St. Andrews in the Nillumbik Shire. Located in the northern part of the Yarra Valley, Rising sits at around 240m above sea level, and gently rises and reaches out of the valley on east, west, north and south-facing slopes.

Australia

New Zealand



ROCKBARE
SOUTH AUSTRALIA
PAGE 36

TAR & ROSES
CENTRAL VICTORIA
MORNINGTON PENINSULA
PAGE 26

SOUTHERN LIGHT VINEYARDS
MORNINGTON PENINSULA
YARRA VALLEY
PAGE 28

IN DREAMS
RISING
STICKS
YARRA VALLEY
PAGE 30

MELBOURNE



CATALINA SOUNDS
CROWDED HOUSE
TAI TIRA
TOTARA
MARLBOROUGH
PAGE 18

NANNY GOAT VINEYARD
CENTRAL OTAGO
PAGE 16

Nanny Goat

VINEYARD

From the ruggedly beautiful terroir of Central Otago in New Zealand, Nanny Goat produces fruit forward wines with powerful firmly structured palates. Founded in 2004 and named after the nimble and sure-footed wild goats of the region, we adapt and thrive in this often extreme climate.

We are known especially for our Pinot Noir which exhibits a trademark dark colour, notes of dark ripe cherry and smoky spicy aromas. Winemaker Alan Peters-Oswald believes that it is his job to make wines that interpret the beauty, the unique place of origin, the individual sites from which the fruit is sourced, and the quality of the fruit used. He makes wines that speak for themselves and are not veiled by excessive winemaking intervention.



Super Nanny Pinot Noir

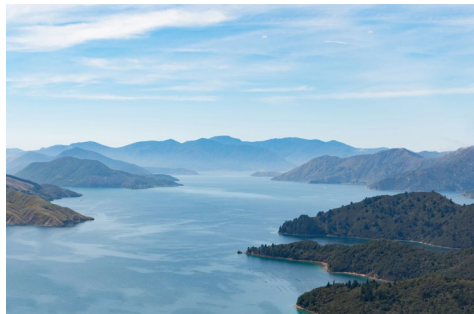
Vintage 2017	Vintage 2018	Vintage 2019	Vintage 2020	Vintage 2021
95 points NZ International Wine Challenge	92 points The Real Review	91 points Decanter	96 points Decanter	95 points Decanter



*"Central Otago is where I was raised,
it's in my blood. It inspires me to pursue the
impossible, the creation of the perfect Pinot."*

Alan Peters-Oswald, Winemaker

UNIQUELY CATALINA SOUNDS



CATALINA SOUNDS

Our journey started in 2005 with a singular vision to produce the best wines in the Marlborough region. Named after the majestic Catalina sea planes that provided vital transport across the vast Marlborough Sounds in WWII, Catalina Sounds produces wines that are distinct and true to their vineyard sites in the Southern Valleys.

We have evolved from our humble origins to become the number one selling premium New Zealand Sauvignon Blanc in New Zealand & Australia. In recent years, we have pushed into new varieties such as Pinot Gris and Pinot Noir. From our home vineyard, Sound of White in the Waihopai Valley, we produce a unique Single Vineyard range of wines, each small batch and unique reflections of our terroir.



When we started we were **BRAVE**, or silly
and amongst the **ONLY ONES**. Now we **SHARE**
the **MARLBOROUGH** valley with many others.
It's what this place was for. It's our house, our
CROWDED HOUSE



CROWDED HOUSE

20 years ago our land was a blank canvas.
A peaceful and remote haven in the majestic
Waihopai Valley ranges.

Crowded House Sauvignon Blanc is a beautifully crisp, dry Marlborough
Sauvignon Blanc. It's balanced, dryer profile makes it more sessionable and
complex versus other New Zealand wines.

It's a classic Marlborough style, the best from what Marlborough has to offer.

Sauvignon Blanc

Vintage 2023
Gold Medal The Global
Sauvignon Blanc Masters

Vintage 2022
90 points
Wine Spectator

Vintage 2021
90 points
Wine Enthusiast



*Maori trading canoe
carved from a single
giant Totara tree.*

totara *New Zealand*

The Totara tree is native to New Zealand, and has long been revered by Maori, as well as early European settlers for its diverse qualities and uses. The Totara possesses strength and durability, properties we strive to emulate with the Totara wines brand.

Totara wines are true to their region, expressing typical varietal characters and complexity and, like the Totara tree, are made for longevity. The fruit and winemaking techniques used in the production of these wines are focused towards producing wines with a point of difference, and to be food-friendly in style.



tai tira

Our philosophy is simple; to produce classically-styled wines with vibrant aromas and fresh flavours, minerality and purity of expression. Our vineyards are fed by the pure waters of the Waihopai and Wairau Valleys – quintessentially and expressively New Zealand.

Tai Tira, or the Sea Traveller represents the journey undertaken by our wines to faraway lands to be enjoyed by all. It emulates the journey undertaken by those who settled in New Zealand and shared the land with future generations.

Our Tai Tira range evokes a pure, pristine & authentic experience, with each sip instantly transporting you to the picturesque vineyards of New Zealand. Our promise to you,

A taste of New Zealand.
Discover where it takes you.



tai <sea>
tira <traveller>



Up to 60% of the carbon cost associated with production & shipping is tied to the glass bottle. We use the lightest bottle available on the New Zealand market; a 417g glass bottle to consciously offset our carbon footprint.

taitira

SAUVIGNON BLANC 2022
MARLBOROUGH NEW ZEALAND

TAR & ROSES



INSPIRED BY THE MEDITERRANEAN.
UNIQUELY AUSTRALIAN.



Vintage 2006 formed the original winemaking partnership of Don Lewis and Narelle King, their vision beginning in Priorat, Spain where they immersed themselves within the classic Mediterranean wine regions & varietals, sparking an interest in how they could be expressed at home in Central Victoria.

Since then, Tar & Roses (named after the signature characteristics of Nebbiolo) has been dedicated to creating unique, Australian expressions of Pinot Grigio, Sangiovese, Tempranillo & Nebbiolo alongside the more traditional Shiraz and Riesling. With Don's sad passing in 2017, Narelle continues their tradition and legacy by handcrafting these unique wines, including more recently, premium cool climate Chardonnay & Pinot Noir from Mornington Peninsula.

CENTRAL VICTORIA



"It's the little things that make the difference. The care and continued maintenance of the wines during maturation, the constant monitoring of temperature and acid levels during ferment, plus the use of quality fruit at the outset combine to ensure a quality wine result. I'm not into set and forget"

Narelle King
Winemaker

WINEMAKER // NARELLE KING
TARANDROSES.COM.AU
@TARANDROSES



SOUTHERN LIGHT VINEYARDS

Our sole focus at Southern Light Vineyards is to craft exceptional Pinot Noir and Chardonnay from Australia's most southerly, cool-climate wine regions.

Produced from our vineyards, from grape to bottle, using the decades of experience of our small team.



Our first releases under Southern Light Vineyards come from our Ghostgum Vineyard, which is situated on a gentle, east-facing slope in Main Ridge, one of the highest elevation growing areas of the Mornington Peninsula. Here we farm 5.5 hectares of mature Pinot Noir and Chardonnay vines grown on ancient volcanic red soils.

"THE AURA OF AN EXCEPTIONAL SITE AND A DEFT HAND IN THE CELLAR."

NED GOODWIN MW



WINEMAKER // ANTHONY FIKKERS
SOUTHERNLIGHTVINEYARDS.COM.AU
@SOUTHERNLIGHTVINEYARDS

IN DREAMS

YARRA VALLEY



IN DREAMS

YARRA VALLEY

Established in the Yarra Valley, Australia's best cool-climate wine region. Our aim at In Dreams is to produce quality, handcrafted wine that expresses the elegance and fruit purity of the Yarra Valley.

We source our fruit from the most carefully selected sites, as we believe that quality wine begins in the vineyard. Our philosophy in the winery is to take a hands-off approach that allows the fruit to shine.

Winemaker Anthony Fikkers belongs to a new generation of winemakers who believe a hands-off approach from vineyard to bottle results in wines brimming with personality and authenticity. This philosophy allows the fruit to shine, and the resulting wines are unadulterated, expressive reflections of time and place.

Pinot Noir

Gold Medal
Yarra Valley Wine Show

Gold Medal
Victorian Wine Show

95 points
Halliday Wine Companion

95 points
Wine Pilot

Chardonnay

Silver Medal
Yarra Valley Wine Show

Silver Medal
Victorian Wine Show

94 points
Halliday Wine Companion

94 points
Wine Pilot

handcrafted wines
begin with a dream...



RISING

YARRA VALLEY



RISING

Rising is about terroir; old degraded soils, varied vineyard aspects, and altitude. Our small-batch, single vineyard wines showcase the wilder, native beauty of the Yarra Valley.

Rising pays homage to the majestic Rising Vineyard, nestled in a valley on the outskirts of the beautiful township of St Andrews - set among unspoiled bushland and rolling hills in the Nillumbik Shire of the Yarra Valley.

WINEMAKER // ANTHONY FIKKERS
RISINGWINES.COM.AU
@RISINGWINES



Established in the Yarra Valley, Australia's best cool-climate wine region in 2001, Sticks has stuck to making wines that the Yarra Valley does best. Today, Sticks stands amongst Victoria's most well-known wineries.

Sourcing fruit from right across the region, we've never sought to follow trends. Our wines speak less of ourselves and a lot of their place. Vineyard quality is paramount, and when combined with some careful winemaking and a touch of intuition, the result is incredibly moreish wines representing the best of Victoria.

Vegan friendly - Lightweight glass - Consumer focused



WINEMAKER // ANTHONY FIKKERS
STICKS.COM.AU
@STICKSYARRAVALLEY



ROCKBARE

The Best of South Australia.

From where vines meet the sea in McLaren Vale, to the fertile red soils of Clare Valley and beyond, we work directly with family-owned vineyards and growers to produce our award-winning wines.

Many have been part of the RockBare journey since we took our first steps back in 1999. Our first wine - a Shiraz from a vineyard near Port Willunga where rugged rocks flank the shore - was the inspiration behind our name.



PLUMM

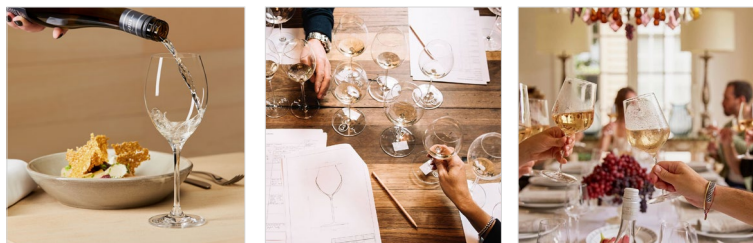
Design.For.Wine

Designed in Melbourne, Plumm is the only wine glass brand in the world owned and run by a wine company.

After making and selling wine for over 50 years, we know that the shape of a glass significantly influences the flavour and aroma of a wine.

Just as listening to music gets better with the right acoustics, the right wine glass will enhance every wine. But who really needs a different glass for every variety of grape?

Let's face it, wine can get complicated but wine glasses shouldn't be. That's why we create glasses for people who love wine like we do but want to keep it simple.



It began with an Italian
racing car driver,
alighting on Australian
shores to make his home
in this new world





“My father soon after began importing food, sourcing and making wines, serving the ‘new’ Australians who had arrived in Australia as assisted immigrants from Italy. He always knew that ‘old’ Australians would one day grow to love those products, and they did. My journey has increasingly focused on wine.”

JOHN VALMORBIDA

Today our simple aim is to make the best wines, from the best vineyards, from the best grapes, from the most suitable regions.

We work with exceptional winemakers whose focus is to make wines that showcase the distinctive characteristics of the most suitable and highly regarded varieties from Australia and New Zealand’s best regions.

Each of our focus regions is underpinned by vineyards we own & manage and wineries where we have full control from grape to bottle. Our winemakers are free to focus on and strive to consistently create quality wines with distinctive regional and varietal fruit expression, finesse, balance and lingering intrigue.





LEVEL 3, 436 JOHNSTON STREET, ABBOTSFORD VIC 3067 AUSTRALIA
JOVALFAMILYWINES.COM.AU